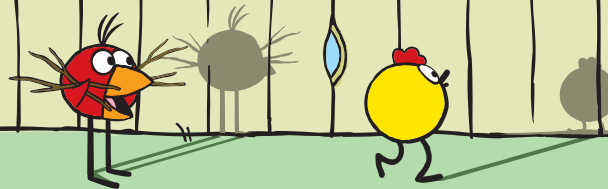









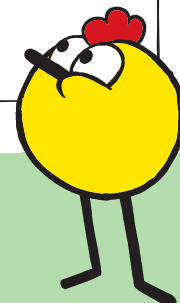
Explore SHADOWS



WEEK 1: Outdoor Shadows

Discover shadows made with the sun's light.

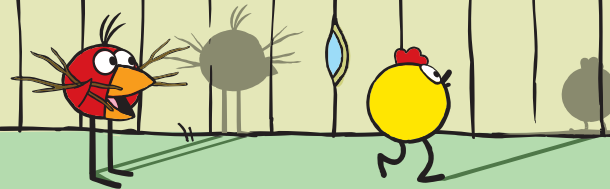
	Day 1	Day 2	Day 3	Day 4	Day 5
 Morning Circle 25-35 MINUTES	Introduce Shadows (15–20 min.) Look for your shadow! Explore and Play: Me and My Shadow (10–15 min.) Let's take photos of you and your shadow and compare them.	Read and Discuss: <i>Nothing Sticks Like a Shadow</i> (15–20 min.) Rabbit thinks he can escape his shadow. Explore and Play: Disappearing Shadows (10–15 min.) How can you make your shadow disappear?	Watch and Discuss: <i>Outdoor Shadows</i> (15–20 min.) Discover different outdoor shadows. Explore and Play: Shadow Letters (10–15 min.) Make letters and shapes with your shadow outside.	Read and Discuss: <i>My Shadow</i> (15–20 min.) We all have shadows. What are they like? Explore and Play: Shadow Tag (10–15 min.) Can you tag your friends' shadows with your own?	Watch and Discuss: <i>Shifting Shadows</i> (15–20 min.) Observe how shadows move during the day. Explore and Play: Shadow Hide and Seek (10–15 min.) Hide your shadow!
 Learning Centers 15-30 MINUTES	Library Center Technology Center Shadow Museum Art Center <div style="text-align: center; margin-top: 10px;">  </div>				
 Guided Activity 20-30 MINUTES	Shadow Walk Identify shadows we see outside every day.	Trace Your Shadow Notice the position, size, and shape of your shadow.	Friendly Shadows Make giant shadow shapes with a partner.	Moving Shadows Observe how shadows change position throughout the day.	Long and Short Shadows Observe how shadows change size throughout the day.
 Closing Circle 10-15 MINUTES	Share the Day's Discoveries	Share the Day's Discoveries	Share the Day's Discoveries	Share the Day's Discoveries	Share the Week's Discoveries



© 2014 WGBH Educational Foundation. All rights reserved. Peep and the Big Wide World and the Peep characters and related indicia are trademarks of WGBH Educational Foundation. All third party trademarks are the property of their respective owners. Used with permission. "Peep," "Quack," "Chirp," "Tom" and "Nellie" were originally created by Kai Pindal for the National Film Board of Canada productions *The Peep Show*, © National Film Board of Canada, 1962, and *Peep and the Big Wide World*, © National Film Board of Canada, 1988. *Peep and the Big Wide World*® is produced by WGBH and 9 Story Entertainment in association with TVOntario. Major funding for *Peep and the Big Wide World* is provided by the National Science Foundation. This material is based upon work supported by the National Science Foundation under Grant No. 1222607. Any opinions, findings, and conclusions or recommendations expressed in this material are those of the author(s) and do not necessarily reflect the views of the National Science Foundation.







Explore SHADOWS



WEEK 2: Indoor Shadows

Explore and create shadows indoors using lamps and flashlights.

	Day 1	Day 2	Day 3	Day 4	Day 5
 Morning Circle 25-35 MINUTES	Watch and Discuss: Shadow Play (15–20 min.) Peep and friends discover their shadows and use them to teach Tom the cat a lesson. Explore and Play: Indoor Shadows (10–15 min.) Make shadows with a lamp.	Read and Discuss: Guess Whose Shadow? (15–20 min.) What is making the shadows you see? Explore and Play: Shadow Matching (10–15 min.) Can you match an object with its shadow?	Watch and Discuss: Night Light (15–20 min.) Quack and Peep find a flashlight and have fun making shadows. Explore and Play: Shadow Detectives (10–15 min.) Track indoor shadows.	Watch and Discuss: Shadow Tracing (15–20 min.) Children trace shadows they make indoors and outdoors. Explore and Play: Shadow Art (10–15 min.) Create art by coloring shadows.	Read and Discuss: Light and Shadow (15–20 min.) Light makes lots of different shadows. Explore and Play: Changing Shadow Shapes (10–15 min.) How many shadow shapes can you make with one object?
 Learning Centers 15-30 MINUTES	Library Center Technology Center Shadow Museum Art Center Lamp Shadow Center Flashlight Shadow Center				
 Guided Activity 20-30 MINUTES	Indoor Shadow Shapes Move and turn an object to make different shadow shapes.	Big and Little Shadows Move objects close to and far from a light to make big and small shadows.	All Sorts of Shadows Shine a flashlight from different positions to make different shadows.	Making Many Shadows Use several flashlights to make multiple shadows.	Shadow Simon Says Can you make the shadow that Simon tells you to?
 Closing Circle 10-15 MINUTES	Share the Day's Discoveries	Share the Day's Discoveries	Share the Day's Discoveries	Share the Day's Discoveries	Share the Week's Discoveries

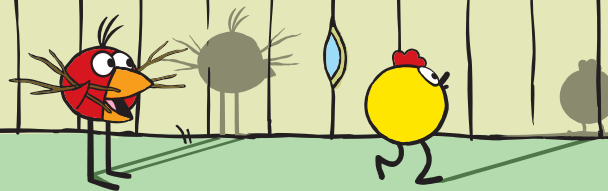


© 2014 WGBH Educational Foundation. All rights reserved. Peep and the Big Wide World and the Peep characters and related indicia are trademarks of WGBH Educational Foundation. All third party trademarks are the property of their respective owners. Used with permission. "Peep," "Quack," "Chirp," "Tom" and "Nellie" were originally created by Kai Pindal for the National Film Board of Canada productions The Peep Show, © National Film Board of Canada, 1962, and Peep and the Big Wide World, © National Film Board of Canada, 1988. Peep and the Big Wide World ® is produced by WGBH and 9 Story Entertainment in association with TVOntario. Major funding for Peep and the Big Wide World is provided by the National Science Foundation. This material is based upon work supported by the National Science Foundation under Grant No. 1222607. Any opinions, findings, and conclusions or recommendations expressed in this material are those of the author(s) and do not necessarily reflect the views of the National Science Foundation.









Explore SHADOWS



WEEK 3: Shadow Theater

Use shadows to create characters and tell a story.

	Day 1	Day 2	Day 3	Day 4	Day 5
 Morning Circle 25-35 MINUTES	Watch and Discuss: <i>Bringing Spring</i> (15–20 min.) Peep and friends introduce a groundhog to her shadow. Explore and Play: Shadow Theater Mystery (10–15 min.) Guess what object is making a shadow.	Read and Discuss: <i>What Makes a Shadow?</i> (15–20 min.) Explore different shadows, including shadow pictures you can make with your hands. Explore and Play: Light and Dark Shadows (10–15 min.) Why are some shadows darker than others?	Read and Discuss: <i>Me and My Shadow: A Book about Light</i> (15–20 min.) Light helps to make shadows everywhere. Explore and Play: Large Shadow Theater (10–15 min.) Experiment with a large shadow theater.	Read and Discuss: <i>My Shadow</i> (15–20 min.) What are all the things your shadow can do? Explore and Play: Shadow Freeze Dance (10–15 min.) Play a game of freeze dance with your shadow.	Watch and Discuss: <i>Shadow Puppets</i> (15–20 min.) Children make shadow puppets and put on a show. Explore and Play: Making Shadow Puppets (10–15 min.) Design and create your own shadow puppet.
 Learning Centers 15-30 MINUTES	Library Center Technology Center Shadow Museum Art Center Mini Shadow Theater Large Shadow Theater				
 Guided Activity 20-30 MINUTES	Mini Shadow Theater Put on a shadow play.	Hand Shadow Puppets Make shadow puppets with your hands.	Shadow Theater: Animal Shadow Puppets Make animal shadows!	Shadow Theater: Monster Shadow Puppets Make monster shadows!	Shadow Puppet Show Use your shadow puppets to put on a play.
 Closing Circle 10-15 MINUTES	Share the Day's Discoveries	Share the Day's Discoveries	Share the Day's Discoveries	Share the Day's Discoveries	Share the Discoveries from Explore Shadows



© 2014 WGBH Educational Foundation. All rights reserved. Peep and the Big Wide World and the Peep characters and related indicia are trademarks of WGBH Educational Foundation. All third party trademarks are the property of their respective owners. Used with permission. "Peep," "Quack," "Chirp," "Tom" and "Nellie" were originally created by Kai Pindal for the National Film Board of Canada productions *The Peep Show*, © National Film Board of Canada, 1962, and *Peep and the Big Wide World*, © National Film Board of Canada, 1988. *Peep and the Big Wide World*® is produced by WGBH and 9 Story Entertainment in association with TVOntario. Major funding for *Peep and the Big Wide World* is provided by the National Science Foundation. This material is based upon work supported by the National Science Foundation under Grant No. 1222607. Any opinions, findings, and conclusions or recommendations expressed in this material are those of the author(s) and do not necessarily reflect the views of the National Science Foundation.

