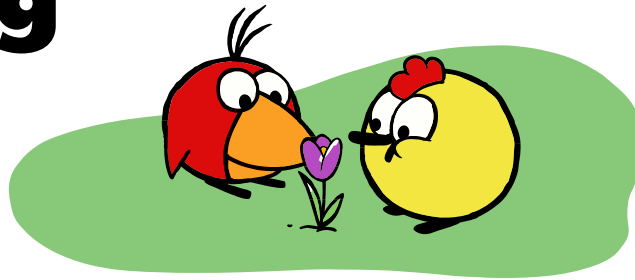
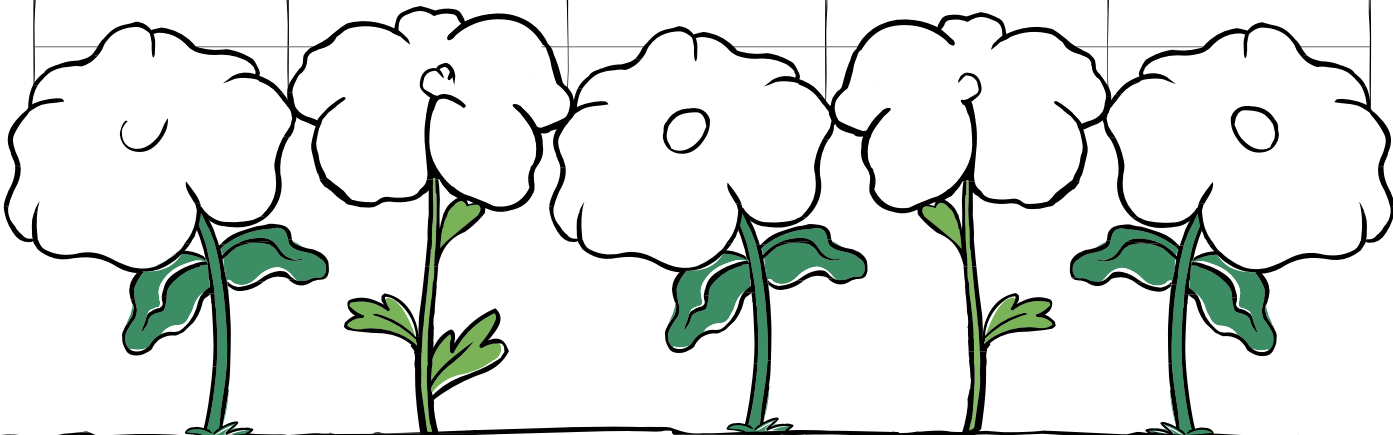


Springing to Life

name: _____





peepandthebigwideworld.com

PEEP and the Big Wide World and the show's characters and related indicia are trademarks of WGBH. ©2007 WGBH Educational Foundation. www.peepandthebigwideworld.com
"Peep" and the other original Peep characters were created by Kai Pindal for the National Film Board of Canada. Peep and the Big Wide World® is produced by WGBH and 9 Story Entertainment in association with TVOntario and Discovery Kids. Major funding for Peep and the Big Wide World is provided by the National Science Foundation. This material is based upon work supported by the National Science Foundation under Grant No. 0104700. Any opinions, findings, and conclusions or recommendations expressed in this material are those of the author(s) and do not necessarily reflect the views of the National Science Foundation. 0104700.